



On Your Lot,
On Time,
Built Right!

IT'S ALL ABOUT

Quality & Value



William Sundby founded HiLine Homes in 1996. With decades of building experience, he had the goal of building high quality, reasonably priced homes for families. He understood how important it was to build a home that not only fit daily needs, but fulfilled dreams, and also helped his customers build personal equity. Today HiLine Homes' talented team of professionals continues this tradition, realizing a home is a welcome retreat after a long day-where family comes together, bonds grow stronger, and where lasting memories are made for years to come.

Our customers come from all walks of life — young couples raising children, families desiring a vacation property near the ocean or mountains, retirees looking to “right-size” their homes. What they all share is a desire to own a new home they can enjoy and take pride in. One that meets their immediate needs and lifestyle. A place that becomes part of their legacy.

In creating your dream, we build feature-rich homes on your land, using only quality materials and proven building methods. By utilizing one of our many professionally designed plans, we can control costs and streamline the building process while giving you peace of mind and creating value for years to come. HiLine Homes utilizes volume buying power and efficient building systems to build your dream home according to your vision, within your budget, on your property.

Our Promise

Guaranteed Build-Time

You'll receive a written guarantee that your home will be substantially complete within 140 days from the start of the foundation. If it isn't, we'll pay you \$100 for every day we go over.

(\$2,000 maximum - See "Our Promise Certificate" for details).

Price Lock Guarantee

You receive 90-day price protection from the day you order your home. Once construction starts, your price is locked until completion.

HiLine Homes Exclusive 10 Year Limited Warranty

Every new home includes HiLine Homes Exclusive 10 Year Limited Warranty to help protect your investment. (See our warranty certificate for details).

Multi-Point Quality Control System

We ensure that every home we build will meet the highest standards possible and goes through our multi-point quality control system.

Communication

You'll always receive clear, and timely communication from our team members. We will always follow up with you regarding your questions and concerns.

We invite you to visit one of our model home centers or show rooms and talk with one of our Home Consultants today!



Plan | 3086
 Living Area | 3086 sq ft
 Bedrooms | 3 + Bonus
 Baths | 2
 2 Car Garage

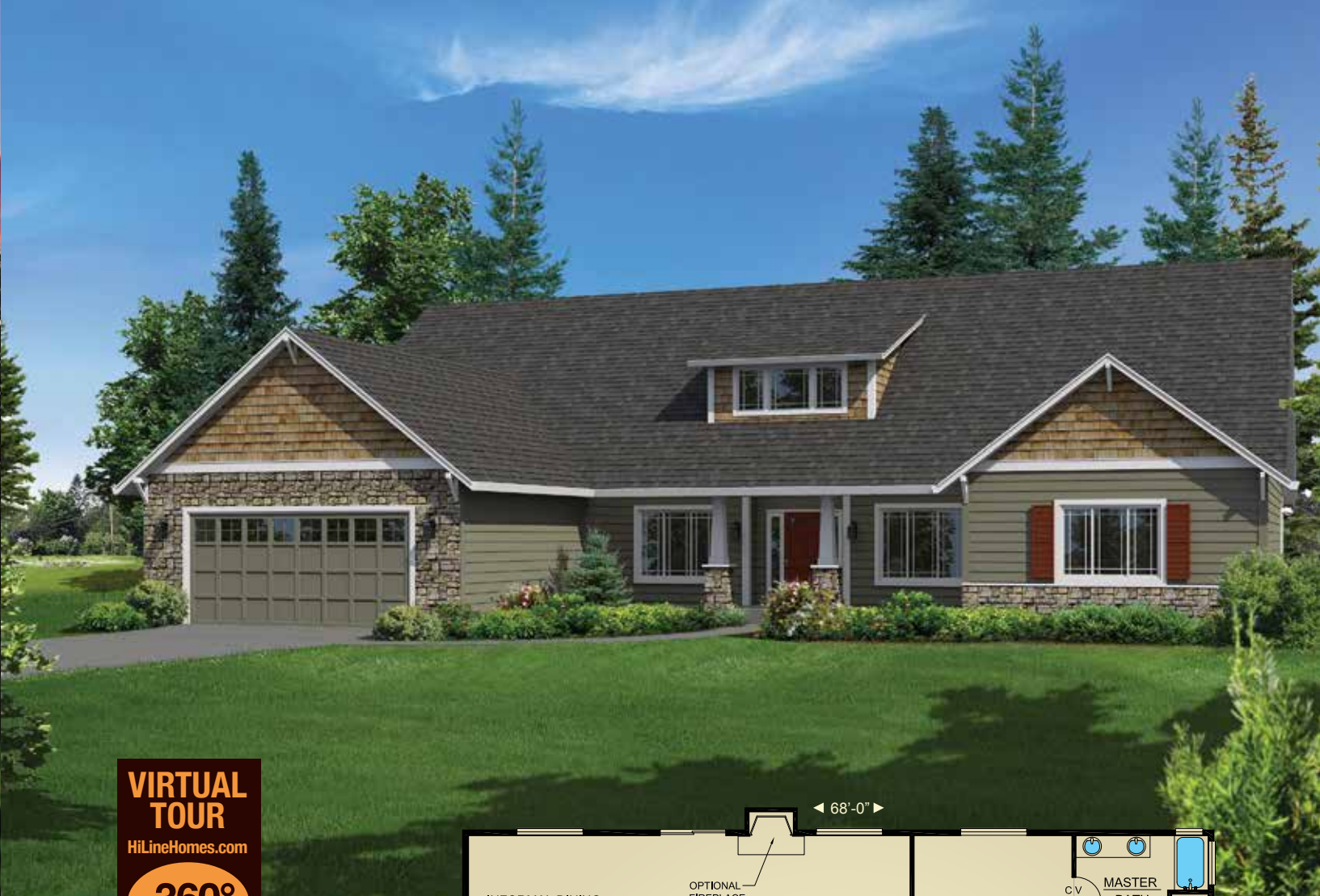




VIRTUAL TOUR
 HiLineHomes.com
360°

Plan | 3072
 Living Area | 3072 sq ft
 Bedrooms | 4 + Den, Bonus
 2 Master Suites
 Baths | 3-1/2
 2 Car Garage





VIRTUAL TOUR

HiLineHomes.com



Plan | 2686

Living Area | 2686 sq ft

Bedrooms | 4 + Den

Baths | 2-1/2

2 Car Garage



VIRTUAL TOUR

HiLineHomes.com



Plan | 2592

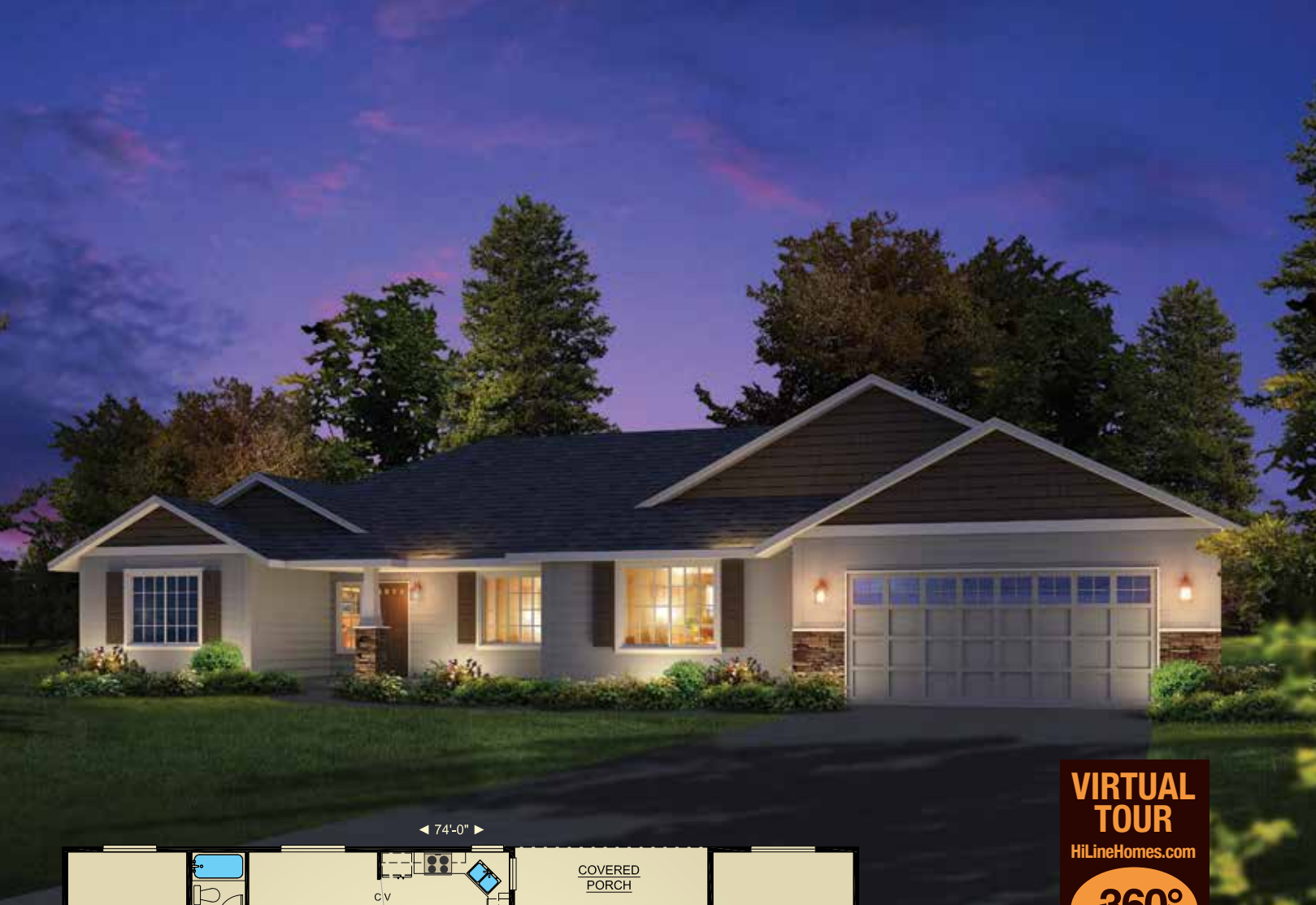
Living Area | 2592 sq ft

Bedrooms | 3

Baths | 2

2 Car Garage





VIRTUAL TOUR
HiLineHomes.com
360°



Plan | 2576
Living Area | 2576 sq ft
Bedrooms | 4
Baths | 2
2 Car Garage



Plan | 2494
Living Area | 2494 sq ft
2 Master Suites
Bedrooms | 4
Baths | 3-1/2
2 Car Garage





Plan | 2443

Living Area | 2443 sq ft
 Bedrooms | 3 + Den
 Baths | 2-1/2
 2 Car Garage

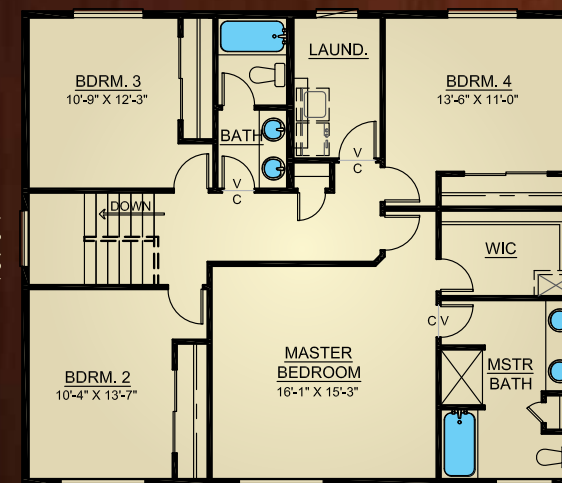


Plan | 2373

Living Area | 2373 sq ft
 Bedrooms | 4 + Den
 Baths | 2-1/2
 2 Car Garage



FIRST FLOOR



SECOND FLOOR



Standard Elevation



Standard Elevation





VIRTUAL TOUR
HiLineHomes.com



Plan | 2345

Living Area | 2345 sq ft
Bedrooms | 4 + Den
Baths | 2-1/2
2 Car Garage



VIRTUAL TOUR
HiLineHomes.com



Plan | 2320

Living Area | 2320 sq ft
Bedrooms | 4
Baths | 2-1/2
2 Car Garage



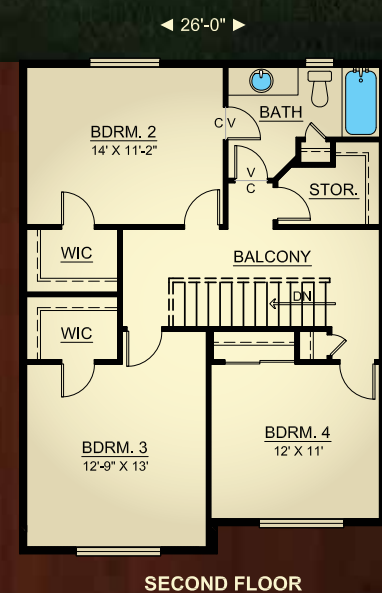


VIRTUAL TOUR
HiLineHomes.com
360°

Plan | 2318
Living Area | 2318 sq ft
Bedrooms | 4
Baths | 2-1/2
2 Car Garage

VIRTUAL TOUR
HiLineHomes.com
360°

Plan | 2302
Living Area | 2302 sf
Bedrooms | 4
Baths | 2-1/2
2 Car Garage





VIRTUAL TOUR
HiLineHomes.com
360°



Plan | 2270
Living Area | 2270 sq ft
Bedrooms | 3 + Bonus
Baths | 2
2 Car Garage



Plan | 2248
Living Area | 2248 sq ft
Bedrooms | 4
Baths | 2
3 Car Garage





2232 Front

VIRTUAL TOUR
HiLineHomes.com
360°

Plan | 2232
Living Area | 2232 sq ft
Bedrooms | 4
Baths | 2
2 Car Garage



2232 Kitchen



2232 Master Bedroom



Standard Elevation



VIRTUAL TOUR
HiLineHomes.com
360°

Plan | 2188
Living Area | 2188 sq ft
Bedrooms | 4
Baths | 2
2 Car Garage

VIRTUAL TOUR
HiLineHomes.com
360°

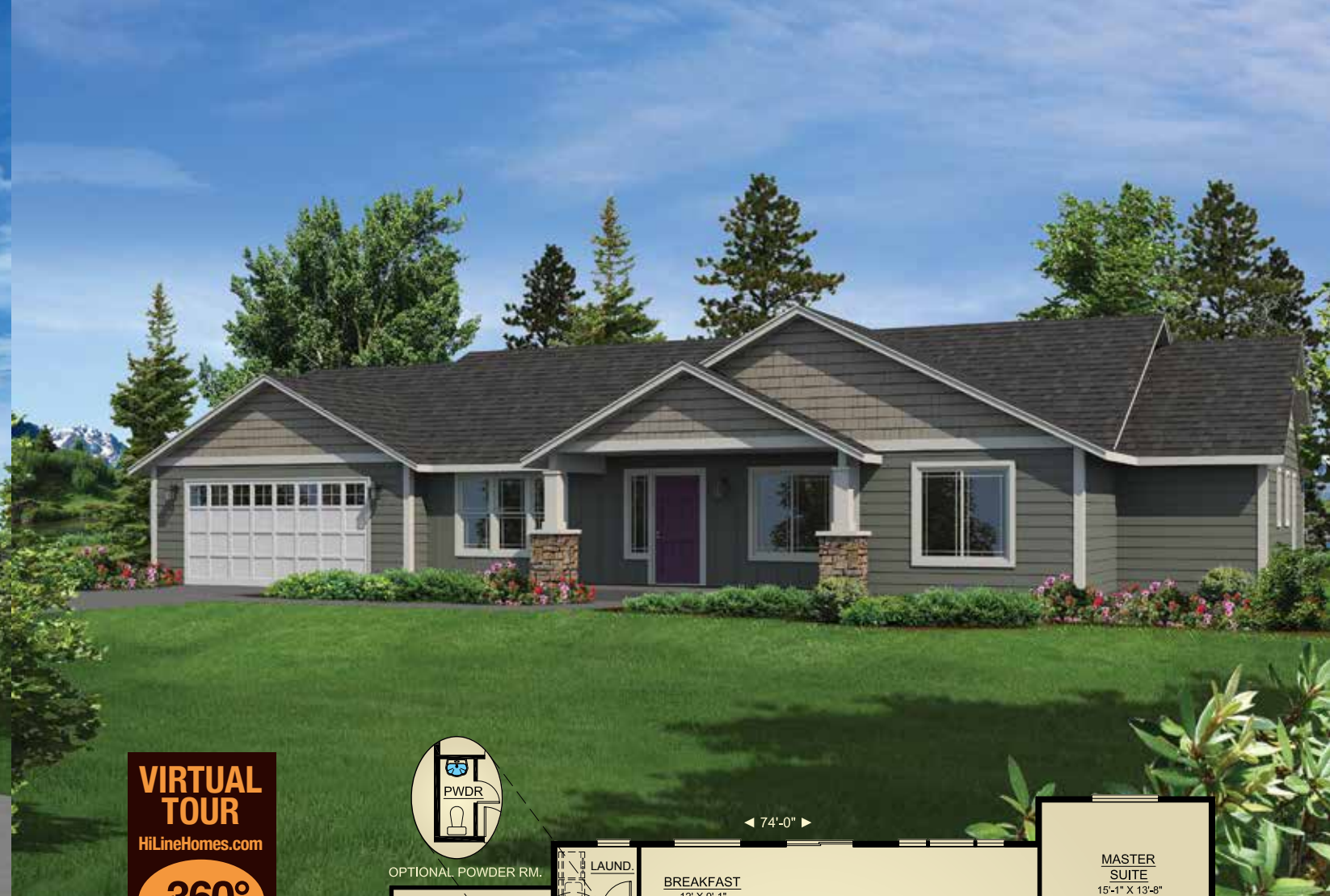
Plan | 2152
Living Area | 2152 sq ft
Bedrooms | 3 + Bonus
Baths | 2
2 Car Garage





HiLine's High Performance Homes® include many features that allow you to live healthier, save money on energy costs, and enjoy the comfort of your home with the assurance that you have made an environmentally & economically sound decision.

- 1 R-23 Blown-in Wall Insulation**
WHY I NEED IT - Blown-in blanket insulation completely fills the cavity, surrounds the electrical and plumbing lines in your walls, and significantly increases efficiency. Not only that, it also reduces noise transfer.
- 2 R-49 Attic Insulation**
WHY I WANT IT - Formaldehyde-free blown-in R-49 ceiling insulation significantly reduces heat loss through your roof, allowing you to keep your interior climate better controlled, and save on energy costs .
- 3 Insulated Headers & Corners**
WHY I SHOULD HAVE IT - By strategically placing framing members and engineering header sizes, we increase the amount of insulation in your walls, which improves efficiency and keeps your energy dollars in your pocket.
- 4 Sealed Ceiling Fixtures**
WHY IT'S A GREAT IDEA - Sealed ceiling fixtures reduces heating and cooling costs, minimizes dust, and thereby improves indoor air quality.
- 5 Sealed Wall Between Garage & House**
WHY IT'S IMPORTANT - Sealing the wall between the garage and house helps to protect your family from the pollutants common in garages that can enter your home's living space.
- 6 Fiber Cement Lap Siding**
WHAT ARE THE BENEFITS - It's a revolutionary product that enhances and protects your home with a unique combination unmatched by any other siding resistant to fire, insects, and decay.
- 7 Exceeds Blower Door Test Requirements**
WHY I'LL BE HAPPY ABOUT IT - Our advanced multi-point sealing throughout the home ensures it significantly surpasses energy code requirements, reducing your heating/cooling costs.
- 8 Engineered Wood Floor System**
WHAT IT DOES FOR ME - Provides a superior strength to weight ratio over conventional lumber. Joists are dimensionally consistent from piece to piece to help keep floors flat and avoid floor squeaks.
- 9 Water Conserving Faucets**
WHY IT'S THE RIGHT WAY TO GO - Water conserving faucets conserve our natural fresh water resources and save you money, while you enjoy substantial water pressure for all of your household needs.
- 10 Capillary Breaks**
HOW IT PROTECTS ME - Capillary breaks between the foundation and framing of your home gives you a protective layer that prevents rotting and moisture transfer into your home.
- 11 .25 to .30 U-Value Windows with LOW E and Argon Gas**
WHY IT'S THE RIGHT THING FOR ME - High performance dual-glazed windows help you to save your energy dollars, block harmful UV rays, and provide a comfortable living environment.
- 12 Pan Flash Windows & Doors**
WHAT IT MEANS - Pan flashing collects and drains water toward the exterior of your home, creating an added layer of defense against moisture intrusion.
- 13 High Performance House Wrap**
WHY IT'S THERE FOR ME - High performance house wrap with a built in drain plane and corded channels is designed to prevent outside moisture from penetrating the house walls.
- 14 Recycle Scrap Building Materials**
WHY IT MATTERS - Recycling scrap building materials helps the environment by reducing landfill waste and lowers the net cost and environmental footprint of your home.
- 15 Low-VOC Primers, Adhesives & Caulks**
WHY I'LL BE THANKFUL I HAVE IT - By choosing products that have little or no volatile organic compounds we significantly reduce toxins in your home, eliminate off-gassing in the environment, and preserve indoor air.



VIRTUAL TOUR
HiLineHomes.com
360°

Plan | 2112
Living Area | 2112 sq ft
Bedrooms | 4
Baths | 2
2 Car Garage

VIRTUAL TOUR
HiLineHomes.com
360°

Plan | 2042
Living Area | 2042 sq ft
Bedrooms | 3
Baths | 2
2 Car Garage





◀ 66'-0" ▶



Plan | 2041
 Living Area | 2041 sq ft
 Bedrooms | 3
 Baths | 2
 2 Car Garage

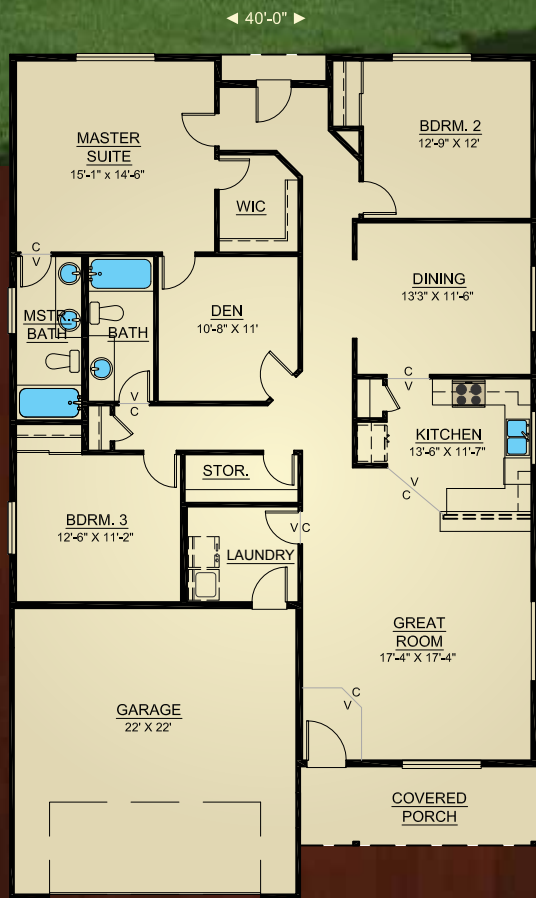


◀ 58'-0" ▶



Plan | 1940
 Living Area | 1940 sq ft
 Bedrooms | 3
 Baths | 2
 2 Car Garage





VIRTUAL TOUR
HiLineHomes.com
360°

Plan | 1883
Living Area | 1883 sq ft
Bedrooms | 3 + Den
Baths | 2
2 Car Garage

VIRTUAL TOUR
HiLineHomes.com
360°

Plan | 1793
Living Area | 1793 sq ft
Bedrooms | 3
Baths | 2
2 Car Garage





VIRTUAL TOUR
HiLineHomes.com
360°

Plan | 1780
Living Area | 1780 sq ft
Bedrooms | 3
Baths | 2
2 Car Garage



VIRTUAL TOUR
HiLineHomes.com
360°

Plan | 1768
Living Area | 1768 sq ft
Bedrooms | 3 + Den
Baths | 2-1/2
2 Car Garage



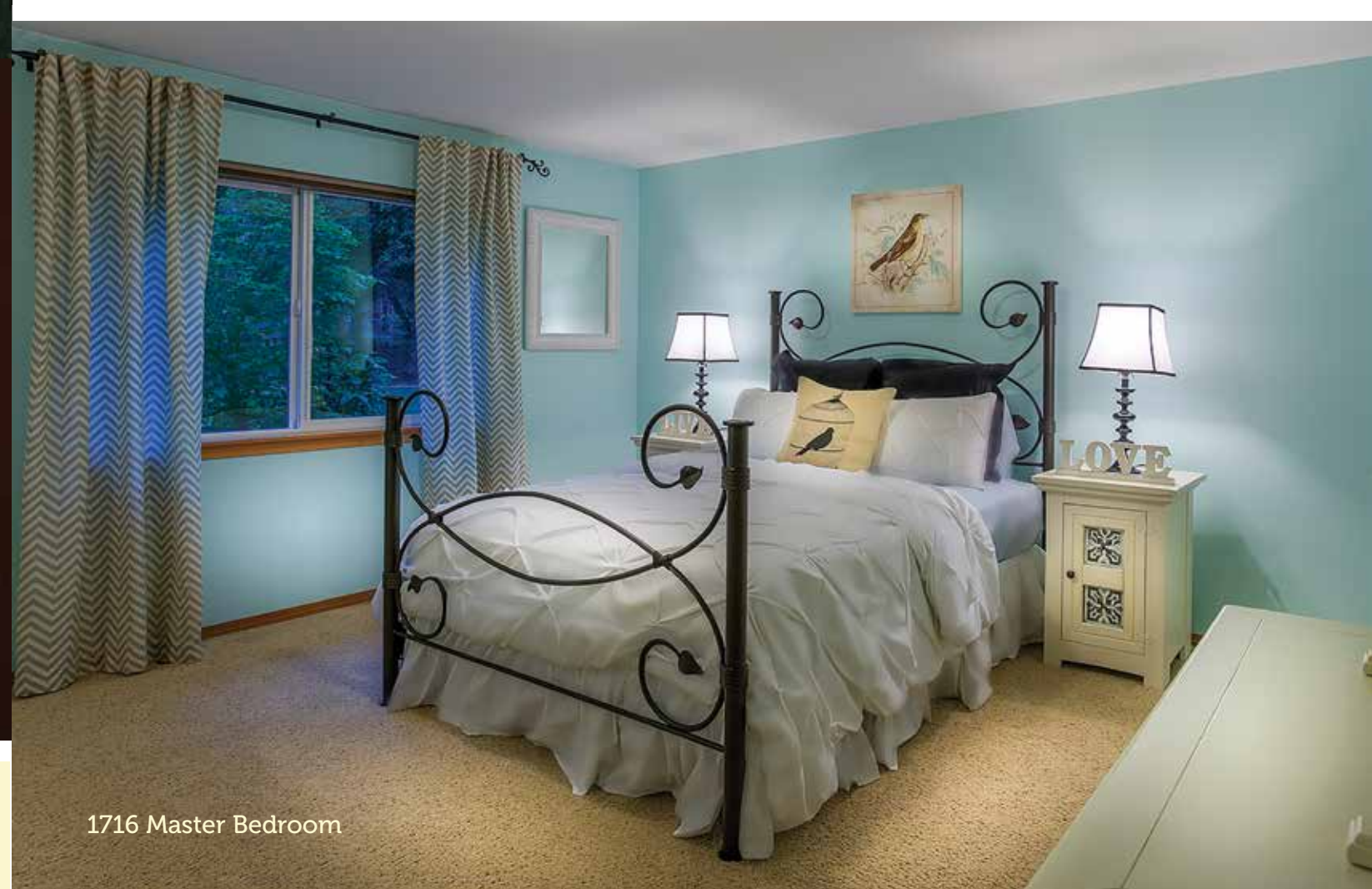
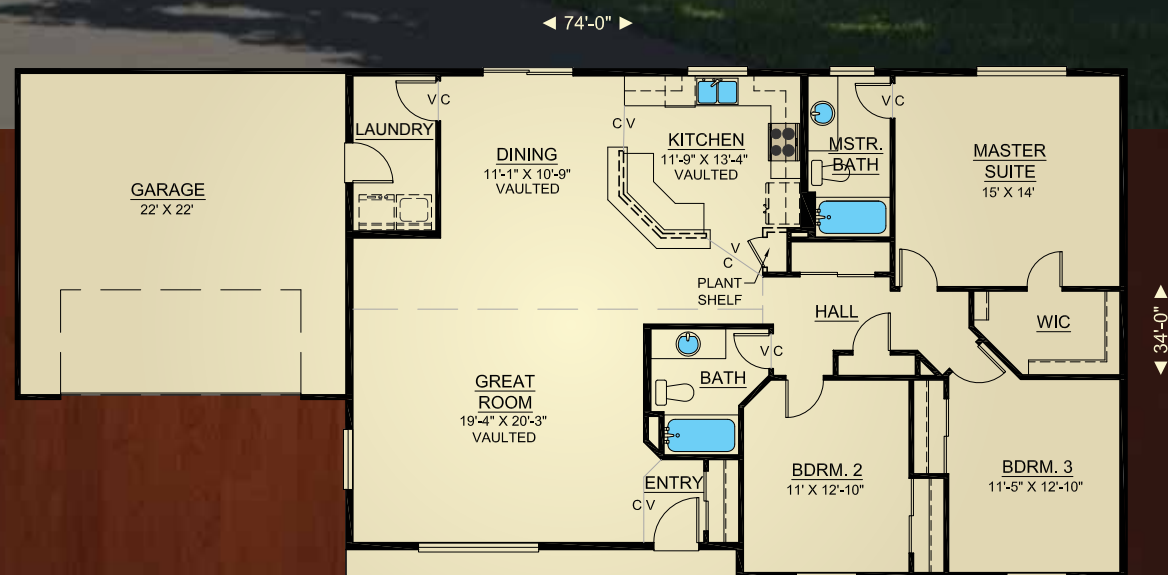


1716 Front

VIRTUAL TOUR
HiLineHomes.com
360°

Plan | 1716

Living Area | 1716 sq ft
Bedrooms | 3
Baths | 2
2 Car Garage



1716 Master Bedroom





VIRTUAL TOUR
HiLineHomes.com
360°

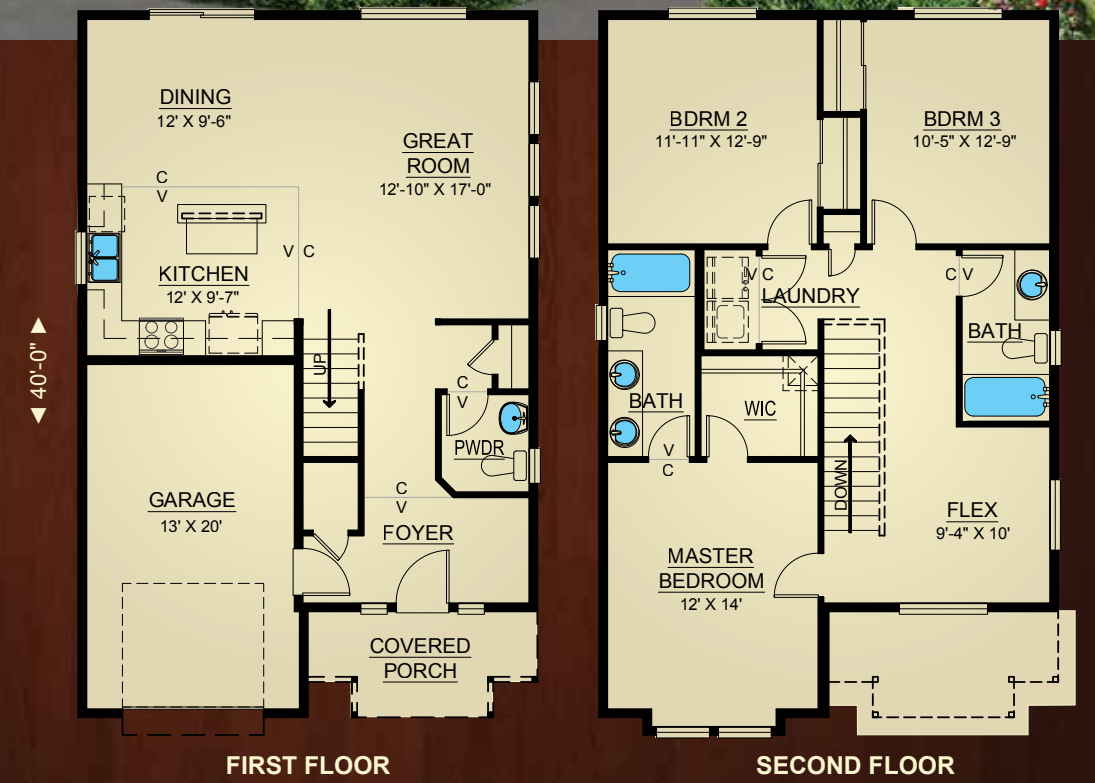
Plan | 1721

Living Area | 1721 sq ft
Bedrooms | 3
Baths | 2
2 Car Garage
Optional 3rd Car



Plan | 1675

Living Area | 1675 sq ft
Bedrooms | 3
Baths | 2-1/2
1 Car Garage



FIRST FLOOR

SECOND FLOOR



VIRTUAL TOUR
HiLineHomes.com
360°

Plan | 1664
Living Area | 1664 sq ft
Bedrooms | 3
Baths | 2
2 Car Garage



Plan | 1491
Living Area | 1491 sq ft
Bedrooms | 3
Baths | 2
2 Car Garage



◀ 54'-0" ▶

VIRTUAL TOUR

HiLineHomes.com



▲ 42'-0" ▼



◀ 44'-0" ▶

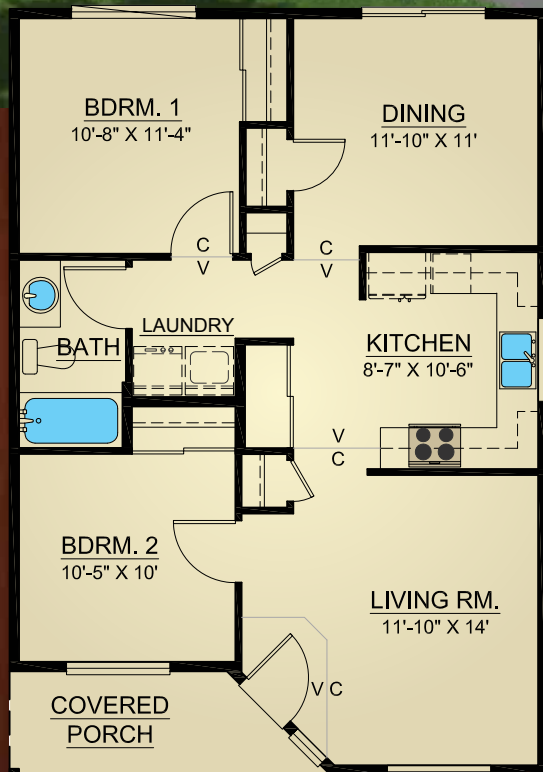


▲ 30'-0" ▼





◀ 26'-0" ▶



Plan | 897

Living Area | 897 sq ft
Bedrooms | 2
Baths | 1

◀ 37'-0" ▶



◀ 48'-0" ▶



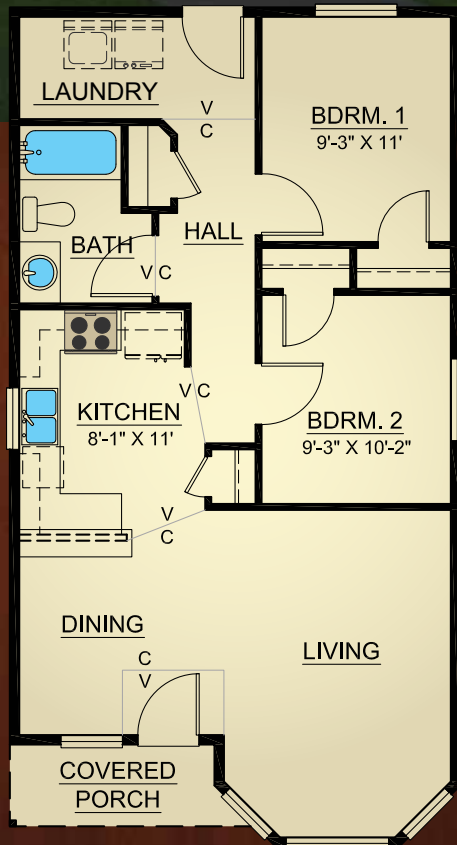
◀ 32'-0" ▶

Plan | 875

Living Area | 875 sq ft
Bedrooms | 2
Baths | 1
1 Car Garage



◀ 22'-0" ▶



◀ 41'-0" ▶

Plan | 843

Living Area | 843 sq ft
Bedrooms | 2
Baths | 1

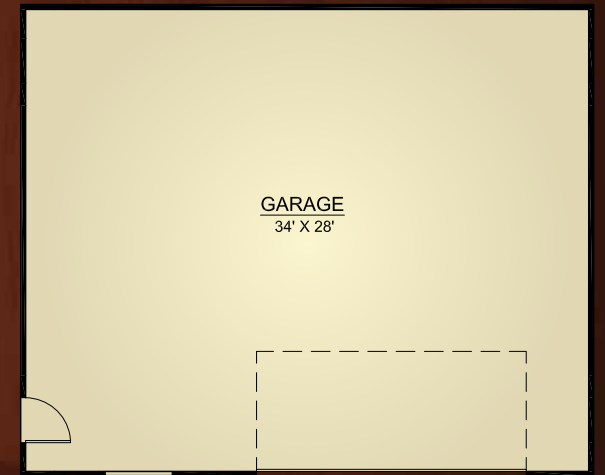
Custom Garages

HiLine Homes offers custom garages. Contact a Home Consultant for more information.



Plan | 952 - Total Area 952 sq ft | 34' x 28'

◀ 34'-0" ▶



▶ 28'-0" ▶

Shell & Super Shell

If you prefer a more hands-on approach, HiLine Homes' Shell and Super Shell packages offer additional ways to customize your home by doing the finish work yourself. Any of our plans are available in Shell or Super Shell packages.

With the Shell package we'll get you started by taking care of the foundation, framing, roofing, siding, windows, exterior doors and interior framing.

You can take it from there and finish your home the way you want.

HiLine Homes popular Super Shell package includes all of the above as well as: rough plumbing, rough electrical, insulation, and sheet rock finished and textured. You can finish with trim, cabinetry, and the interior details that make your home unique.

So what are you waiting for? Pick up that hammer! You can have a custom built home at an affordable price.



Washington

Puyallup

11210 Woodland Ave E
Puyallup, WA 98373
(253) 840-1722

Info.Puyallup@HiLineHomes.com

Satsop

306 S 4th Street
Satsop, WA 98583
(360) 482-4224

Info.Satsop@HiLineHomes.com

Poulsbo

15687 Viking Way NW
Poulsbo, WA 98370 WA
(360) 681-8838

Info.Poulsbo@HiLineHomes.com

Woodland

1888 Belmont Loop
Woodland, WA 98674
(360) 225-1768

Info.Woodland@HiLineHomes.com

Yakima

2204 W Nob Hill Blvd
Ste G
Yakima, WA 98902
(509) 215-7853

Info.Yakima@HiLineHomes.com

Kennewick

3104 W Kennewick Ave
Ste F
Kennewick, WA 99336
(509) 820-3389

Info.Kennewick@HiLineHomes.com

Oregon

Salem

925 Lancaster Dr. SE
Salem OR 97317
(503) 399-1721

Info.Salem@HiLineHomes.com

Redmond

1454 NW Maple Rim Ct
Redmond, OR 97756
(541) 647-1600

Info.Redmond@HiLineHomes.com

Roseburg

4681 NE Stephens St
Roseburg OR 97470
(541) 957-1721

Info.Roseburg@HiLineHomes.com

Medford

6080 Crater Lake Ave
Central Point, OR 97502
(541) 831-1721

Info.Medford@HiLineHomes.com

California

Redding

8938 Airport Rd - Ste A
Redding, CA 96002
(530) 746-6043

Info.Redding@HiLineHomes.com



**On Your Lot,
On Time,
Built Right!**



NAHB



Edition 5/17/2017 | ©1996-2017 All Rights Reserved - HiLine Homes. Contractor License: Washington # HILINH*983BD, HILINH*845D3, HILINH*841JA | Oregon CCB# 182300, CCB# 181069, CCB#181652, CCB# 210297 | California CCSLB# 1001720. Any use, modification or derivative works of floor plans without permission constitutes copyright infringement. Plan numbers indicate approximate square footage of living space. Renderings of elevations shown may reflect artists interpretation and/or optional features, and may not represent the finished product. Builder reserves the right to change specifications and price without notice or obligation.

Corporate Headquarters

11306 62nd Ave E
Puyallup, WA 98373 WA
(253) 770-2244

HiLineHomes.com